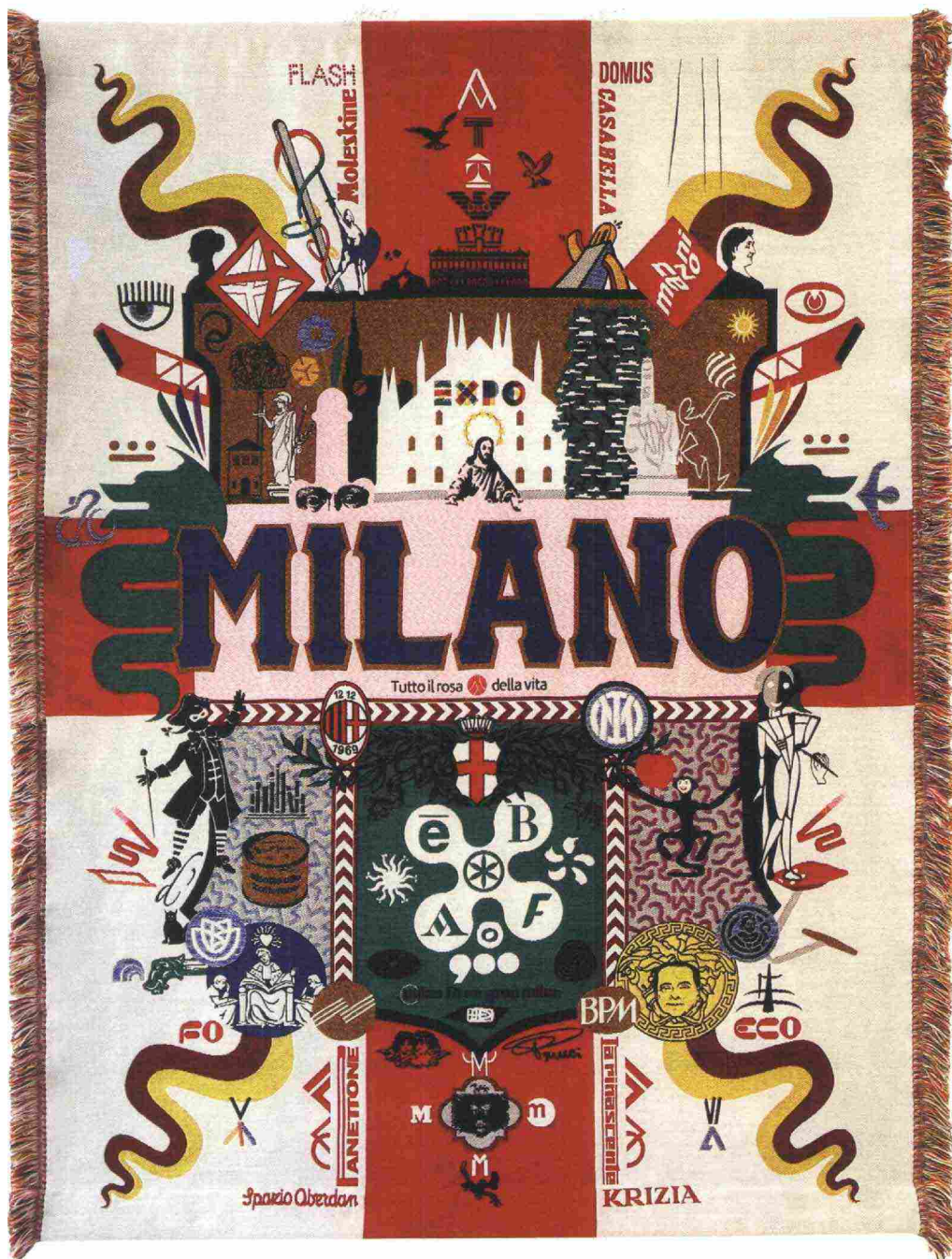


A city in symbols: 21st Century Heraldry of Italy/Milano, tapestry by Rotterdam atelier 75B designers exhibited at the Masterly The Dutch exhibition in Milan (via Meravigli 3)



SHOWTIME!

The shapes, materials, colours of the new season's products.
 Which, through spontaneous or intellectual associations, become little stories.
 Graphic games, alchemies of taste. All always highly narrative. And inspirational.
 Because, in the end, design can have its own light dimension

by Patrizia Piccinini

Ritaglio stampa ad uso esclusivo del destinatario, non riproducibile.

132313

MOODBOARD



Mid Century

1 | *Gaius*, a carpet designed by Elena Salimistraro for **ILLULIAN** (Hall 3/F16), is a soft colour field in which stylised geometric shapes chase each other or overlap, creating a pattern with an ancient, ancestral flavour. 2 | *Tonda*, the new suspension lamp by Ferruccio Laviani for **FOSCARINI** (Corso Montefiore, 19), an elegant reinterpretation of the past. 3 | *Lina* lantern by **ANALOG LAB** (Via Vigevano, 27), in steel with a handle for transport in white oak or American walnut. 4 | *Alley* is a table by Maurizio Manzoni for **CANTORI** (Hall 01/C05) with minimal metal supports in various finishes, with tops in marble, wood or smoked glass. 5 | *La Chaise longue* by **ADAL** (Superstudio, via Tortona, 27) from the "Look Into Nature" line is made in igusa, a type of rushes found in rice fields. 6 | With new measurements, the display case with doors in extra-light glass is back, in the *Ecco* collection by Marcel Wanders Studio for **FIAM ITALIA** (Hall 05/B11). 7 | *Kernel* ash wood vases from the "Woodland" line by Marra Laudani for **RUBINACCI NAPOLI** (Hall 06/E36). 8 | *Stellage* S2 leather chair designed by Gabetti & Isola, Raineri for **CECCOTTI COLLEZIONI** (Via Durini, 23): a reissue of the chair created for the Turin Stock Exchange. 9 | Taking their cue from the 1960s, the *Greg* tables by Domenico Mula for **DOM EDIZIONI** (Hall 01/C06) are finished in bronze and brass.

132313

Ritaglio stampa ad uso esclusivo del destinatario, non riproducibile.

Soft Tone

1 | *Dragon White* carpet from the capsule collection of **BATTILOSSI** (Design Variations - Circolo Filologico, via Clerici, 10), a modern reinterpretation of the throne room in Imperial China.
 2 | A graphic profile for the *Madame* lamp from **IL FANALE**, available in natural brass or in a two-tone version. 3 | *Pure Macarons Teakhouse Candle* in textured biscuit porcelain, finished by hand, from **JO MALONE**. 4 | The *Palmira* modular bookcase by **ETRO HOME INTERIORS** (Hall 4/ B07-B12) plays with the juxtaposition of the dark bronze and shiny brass of the structure and the wenge-stained Carbalho wood for the shelves. 5 | *Blossom* is a collection of sofas, chairs and ottomans with soft, enveloping lines, created by **NOVAMOBILI** (Via Melchiorre Gioia, 6/8). 6 | New items from **GEORJOD THONET VIENNA** (Hall 20/D02) include the *Dejour* table in straw and curved wood with brass tips, designed by GamFratesi. 7 | A simple, essential curved upholstered piece. The *Needle* chair created by Augusto Betti in 1967 returns to the catalogue at **PARADISOTERRESTRE** (ADI Design Museum, Piazza Compasso d'Oro 1).
 8 | The *Marilyn* table by Libero Rutilo for **MORELATO** has a top in ash wood, placed on a marble base with plissé workmanship. 9 | Inspired by Ovid, the *Metamorphoses* tiles by **SAGEVAN** (Hall 10/F22) feature drawings by Vincenzo D'Alba of the Kiasmo group, in Calacatta marble and gold-leaf engravings.



MOODBOARD



Colour way

1 | The new *Brahma* line from **JAIPUR RUGS** (Hall 08/C29) has been created by Ashish Shahe, for a reflection on ancient Eastern studies of astronomy. 2 | *Venus* is a collection of lamps based on the sinuous feminine figure, in metal and lycra, by Serena Confalonieri for **SERVOMUTO**. 3 | The *Penara* stool with crafted weave adds a new piece to the outdoor collection of **PEDRALI** (Hall 06/A23-B24). 4 | The *Miya* table by Elena Salmistraro for **CAPPELLINI** (Vicolo Santa Cecilia, 4), available in two sizes and heights, is a sculptural object in blown glass composed of three interpenetrating parts. 5 | The *Bigger* 3 sofa is a curved upholstered piece, enhanced by a new elastic cover by **ROCHE BOBOIS** (Hall 06/C24). 6 | The *Aradia* pouf by Serena Confalonieri for **GERBUDER THONET VIENNA** (Hall 20/D02) is based on the arches and colonnades of neoclassical mansions. 7 | The *Spy* fabric seat by **SCAPPINI** has a decorative ring in brass-finish resin at the back (Hall 04/D01). 8 | **B&B ITALIA** (D studio, Via Durini 14) presents *Le Bambole* by Mario Bellini, in a radically updated version, 50 years after the original design. 9 | After the success of *Amanda*, here comes *Amanda*, a service table with a comic-book form by Favaretto&Partners for **SLIDE** (Hall 10/D14).

MOODBOARD



Green mood 1 | *Triennale* is one of the 10 patterns of the Marmosato collection created by Carlo Dal Bianco for **BISAZZA** (Via Solferino, 22). 2 | The *Double* collection by LCM Marin Design Studio for **BROKIS** features blown glass spheres with light metal accents. 3 | A tribute to writing, *Yakio* by Gordon Guillaumier for **ALF DA FRE** (Hall 12/A19-B16) is an elegant, light desk for use in the home. 4 | Thanks to the addition of an extension, *Combo* becomes a high table. Part of the Regeneration project by **NARDI** (Hall 10/C02-C04) calling for the use of regenerated plastic. 5 | Timeless elegance for the *Montgomery* chair with structure in ash wood, created by Dainelli Studio for **GIORGETTI** (Hall 05/G07-H10). 6 | Clean lines and refined elegance for the *Lilas Mosaïque* modular seating system created by Dainelli Studio for **GALLOTTI&RADICE** (Hall 05/F09-G10). 7 | **LAPALMA** (Hall 20/D15-E16) presents *Jazz* by Giuseppe Bavuso, a versatile bookcase for free positioning at the center of the room, thanks to feet that can be anchored to the floor. 8 | The *Wabi Sabi* tray by Dawn Switzer for **ETHNICRAFT** takes its cue from nature. 9 | **MINICAD** associates a metal look for the *Shine* lamp, a modern, minimalist design.

Ritaglio stampa ad uso esclusivo del destinatario, non riproducibile.

132313

Into the night

1 | *The Floor Is Lava* by **CARPET EDITION** (Hall 06/E33) is an exclusive line designed by PLACÉ, for the design editor of experimental pieces in dialogue with art. 2 | *The Poy* collection of lamps by **MASIERO** (via Statuto, 16), in blown glass and brass, is a tribute to the world of flowers created by Sara Moroni. 3 | The new *Diamond* mirrors from **RIFLESSI** (Piazza Velasca, 6) use stainless steel sheet with a nanoceramic antibacterial and anti-fingerprint treatment. 4 | **LEMA** (Hall 07/B15-C24) expands the *Ombra* seating collection created by Piero Lissoni, adding a stool available in two heights. 5 | Versatile design for the *Mini* ottoman by **GIANFRANCO FERRÈ HOME** (Hall 4/B07-B12), available in nabuk or various fabrics from the collection. 6 | Based on an original design from 2005 by Tito Agnoli and faithfully reinterpreted by **POLTRONA FRAU** (Via Manzoni, 30), the *Aurora Tre* bed has an enveloping padded headboard. 7 | The room divider created by Michael Goldmaker for **ADAL's Look into Nature** collection is inspired by the Japanese lifestyle (Superdesignshow at Superstudio, via Savona 27). 8 | *The Large Pompidou* vase by **JONATHAN ADLER** is decorated with motifs based on the Seventies. 9 | Barbara Bertoldo for **L'OPIFICIO** has created *Vicversa* and *Vicversa Moné*, two Gobelin DoppioDritto jacquard weaves for use on both sides.



Ritaglio stampa ad uso esclusivo del destinatario, non riproducibile.

132313

MOODBOARD

1

2

3

4

5

6

7

8

9

Natural mood

1 | A bucolic landscape inhabited by extinct animals decorated the *Memento Madley Carpet* by **MOOOI** (via San Gregorio 29). **2** | For **FLOS** (corso Monforte 9 & 15), Patricia Urquiola has designed *Almetrida*, the lighting system with diffusers in polycarbonate, with an almond-like form. **3** | Free, fluid shapes made by skilled hands for the new *Laguna* collection in Murano glass designed by Ludovica+Roberto Palomba for **PURHO**. **4** | A family of sofas and chairs, for relaxing or dining, the *Pender* collection created by Favaretto&Partners for **TRUEDESIGN**. **5** | In the *Split* bookcase, designed by Luca Papini for **STURM MILANO**, transparent or coloured polystyrene cylinders separate the shelves (Hall 8/D28). **6** | *Ines* by **CALLIGARIS** (Hall 12/C11-D08), with a wooden base, is the natural extension of a seating family with soft, welcoming forms. **7** | The new version of *Matriex* by Piero Lissoni, with a new oval top and truncated conical base, both in sanded natural ash wood, with an extra-clear finish in Nordic style. By **PORRO** (Hall 07/D15-E18). **8** | The *After All* collection of chairs by Christophe Pillet for **VERY WOOD** (Hall 07/F11) has classic essential lines, underscored by the use of Vienna straw for the back. **9** | To celebrate over 70 years of collaboration between Hans J. Wegner and **CARL HANSEN & SØN** (Faro Buonaparte 18A), London-based designer Ilse Crawford dresses up the *Wibborne Chair* in nine new colors.

Ritaglio stampa ad uso esclusivo del destinatario, non riproducibile.

MOODBOARD



Personal Garden 1 | The 1930s-inspired *Blueberry Bamboo* rug is part of the new *Green Dry* collection designed by Carlo Colombo for **SAHRAI** (via Manzoni 45). 2 | *Gaia* is a rechargeable lamp for direct and ambient lighting. Designed by Marc Sadler for **ETHIMO** (Hall 16 / E25-F20), it features a shade in fabric from the Rubelli outdoor collection. 3 | Precious and very soft *Yale* plaid from **SOMMA 1867** (Hall 03/C18) made of fine Australian Merino lambswool. 4 | A product based on encounters between different styles, tastes and cultures: the *Hasbi* sofa is a system with a minimal rigid structure, designed by Federica Biasi for **GERVASONI** (Hall 7/F11-G12). 5 | *DRESS_CODE* is a seat with ample proportions that changes thanks to sartorial coverings, the result of a novel collaboration between **S-CAB** and Cumdesign, alias Laura Fracchi and Gabriele Pardi (Hall 12/B11-C12). 6 | The profiles of the *UZ* series by Angelieri & Ruzza for **YAZZ** (Hall 2 / F10) stem from the study of the geometric form of the cylinder, adjusted in height and diameter and rendered more complex by tapering at the ends. 7 | Tables from the *Stone* line of the outdoor collection by **DITRE** (Hall 12/C05-D06), taking inspiration from the purity of nature. 8 | The charm of stone and the force of concrete in the *Bold* series of tables by **ETHIMO** (Hall 16 / E25-F20), which combines lightness and softness of lines with the sculptural presence of the structure. 9 | Lamp/vase with metal structure by **BLOOMINGVILLE**.

Ritaglio stampa ad uso esclusivo del destinatario, non riproducibile.

132313

Déjeuner sur l'herbe

1 | The *Mutache* rug by **KRISTALIA** (Hall 20/A05-B06), a line designed by Paolo Zani with a mélange weave in refined hues, bordered in various colors with fringe for an even more original look. 2 | *Piton* portable lamp by **MUUTO**, designed by Tom Chung, makes playful reference to the archetype of the torch. 3 | Inspired by the history of Japanese design and Art Nouveau, the *Bamboo* chair by **TECTONA PARIS** (Via Moscova 47/A) is made in aluminium, with black powder coating. 4 | *Lull* umbrella by **FERM LIVING** with trunk in FSC-certified wood, for UV30+ protection. 5 | *Alodia* by **BABEL D** (Foro Buonaparte 57) is a sculptural folding chaise longue designed by Walter De Silva and Mario Antonoli, utilizing curved rectangular stainless steel sections to create a perfect interlock. 6 | The *Argo Alu* three-seat sofa by Ludovica+Roberto Palomba for **TALENTI** (Hall 16 /E33-E28) stands out for a structure with large lateral borders in aluminium with exposed belting along the entire perimeter of the seat, creating a game of color. 7 | Presented in both indoor and outdoor versions, the *Keel Light* wooden seating by Mario Ferrarini and Victor Vasilev stands out for the quality of the fabric covering and the wood varieties used for the back. By **POTOCO** (Hall 07/L15-M12). 8 | *Azieta*, designed in collaboration with Adam D. Tihany, is the new collection by **UNOPIÙ** (via Pontaccio 9) that takes its cue from outdoor furnishings in wrought iron with a retro look. 9 | *Plant Pot* is a series of minimalist flowerpots and coordinated saucers by **HAY**. Made in strong, light polystone, with inner covering for greater protection.



MOODBOARD



Domestic SPA 1 | The capsule collection *Tiles (R)evolution* by **CERAMICA BARDELLI** and **SELETTI** (Hall 7/L25) is composed of various surfaces for floors and facings. They include **Black&White**, a mosaic in single-fired ceramic with glossy and matte finish. 2 | The *Serpentine Light* is an airy suspension lamp with unpredictable, striking volumes, in a new project by the duo **Front** for **MOOOI** (via San Gregorio 29). 3 | The *Pantelleria* towel set by **LANERROSSI** is trimmed with a contrasting colour thread. 4 | Lightness and transparency are the attributes of *Alizante*, the new cabinet for the living area designed by Giuseppe Bavuso for **RIMADESIO** (via Uberto Visconti di Modrone, 26). 5 | The *Q316* series designed by the architect Roberto Innocenti for **ZAZZERI** (Hall 22/H16) is a complete collection for the bathroom and kitchen in AISI 316L stainless steel. 6 | *Calla*, the sink with a retro form, and *Joy Neo*, the new collection of mixer faucets, are the two new offerings created by Ludovico+Roberto Palomba, becoming part of the Atelier Collections by **IDEAL STANDARD** (Hall 24 /H11-L10). 7 | Simplicity, clean lines and components, and simple finishes. This is the *Tonidina Far* chair created by Favaretto&Partners for **INFINITI** (Hall 12/B01-C04). 8 | The new collection of radiators designed by Rodolfo Dordoni for **ANTRAX IT** (via S. Damiano 5) is called *Gibba* and reinterprets traditional aesthetic canons with forceful, essential signs. 9 | *Geometria* is rigorous, innovative and offers high heating performance: the new collection of radiators by **BREM** (Hall 24/C08) introduces novel graphic, conceptual and material elements on walls. Designed by Davide Diliberto and Luigi Brembilla. 10 | *Foam* glass vase by **HOUSE DOCTOR**, in glass with surface bubbles.

RE/START

Three simple questions addressed to design protagonists who will return to Milan this year. Three answers that reveal an entire world for each of them:

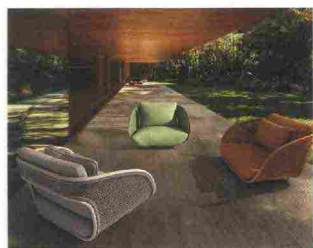
- 1. What was the object that represented the lockdown the most for you?*
- 2. What object represented the restart?*
- 3. What are the main projects you'll be showing at the Salone (or Fuorisalone)?*

by Marina Jonna



CHIARA ANDREATTI

1. The *Majesty* exhibition curated by Maria Cristina Didero and Francesca Molteni for the Italian Cultural Institute in Toronto. With Francesco Faccin, I was involved in interpreting and representing nature with images, videos, objects and materials, drawing parallels between Canada (Toronto) and Italy (Piana del Consiglio). **2.** *Anca*, the sideboards produced by Pretziada. After the lockdown, they represented a return to collaboration with the world of crafts, a slow way to restart. **3.** An entire collection of products with Fendi Casa. My ongoing role of art direction with Potocco: we will be at the fair with a collection of indoor and outdoor carpets, and the armchair version of the *Elodie* sofa. And we'll be announcing an all new art direction assignment with the historic carpeting brand Radici.



ANGELETTI RUZZA

1. The table, because the whole family gathered there. Four of us shared that space, mixing passions, functions and words. We lived through important moments and feelings, which evolved into new inspirations for life and projects. **2.** More than one. Definitely the *Bordone* upholstered furniture collection designed for My Home, which responds to new needs and usage modes, adapting to changes in the society. For us, the restart was also marked by a new collaboration with the very young Turkish company Yaaz, for the art direction. **3.** We will be showing the Lalita collection of bath fixtures by Globo Ceramica; three outdoor collections for Yaaz: *Barla* (in photo), *Uz* and *Ova*; the *Bordone* sofa system for My Home. And new products of Bottega Intreccio, Cristina Rubinetterie, Daa Italia.



GIULIO CAPPELLINI

1. The small *Bambi* desk (in photo) by Nendo for Cappellini. Since I had to work at home, I created a little corner furnished with this table on which I could place all my working tools. **2.** The object for the restart is the *Miya* table by Elena Salmistraro. An ode to joy, color and Italian craftsmanship. A piece that represents the "Nuovo Rinascimento." **3.** For Design Week we present two exhibitions at IBM Studios Milano. *Looking to the Future: Cappellini's* vision of contemporary objects, with new projects by designers with whom we have a long-term relationship, like Jasper Morrison or Patricia Urquiola, and new entries like Big Studio or the very young Nik Albrecht. And *The Cappellini Slowdown Refuge: Cappellini's* take on the home of today and tomorrow, design and technology.



ANTONIO CITTERIO

1. My *Convivium* kitchen, designed in 2002 for Arclinea: because the kitchen is the place we have rediscovered most during the lockdown. **2.** The *Lee Outdoor* chair by Flexform: the newfound freedom of enjoying outdoor spaces together with others. **3.** At the Salone we will be on hand with new products for Knoll and the new *Eliseo* seating family for Flexform.



CARLO COLOMBO

1. The pencil, definitely. I spent most of the time designing, drawing, putting new ideas on paper. **2.** I'd say the 3D visor. The desire for the future is there, inside new technologies. **3.** At the Salone I'll be showing collections for various companies, including Flexform, antoniolupi (*Ofuro*, in photo), Giorgetti, Flou, Artemide, Bentley Home, Trussardi, Casa, Sahrai, Elie Saab Maison and Trep+. Each project narrates the DNA of the company and my personal vision of design.



SERENA CONFALONIERI

1. My self-produced glasses, *Calypso*: the project began during lockdown, from the necessity of a moment of escape and lightness, at least mental lightness. **2.** The first is still a work in progress: the interior of a restaurant at the gates of Milan, 13.10 Ristorante. The second is the mural *Città Studi* for "Un nome in ogni quartiere," an initiative of graphic art to bring value not only to the neighborhood, but to all of Milan as well. **3.** I'll be at the fair with the *Arcadia* ottoman for Gebrüder Thonet Vienna. At Alcova there will be the new collection for Servomuto, Venus, and the installation *Venus in Lycra*. At via Durini, the *Layla* lamps by MM Lampadari; at Palazzo Litta, the cushions of the *Barbagia Collection*, made with Fondazione Cologni and Triennale di Milano; at Starbucks's Roastery, a project for Interni and Victoria Arduino.



MATALI CRASSET

1. This period allowed me to draw and to make a book with about 300 drawings, published by Presses du réel in 2021. I then had fun transforming them into an animated film, almost as if to make this suspended time continue. **2.** The collaboration with historic companies like Atelier Missègle, Atelier Tuffery, Maison Berger, Roger Pradier, Tissage Moutet, EPV; small businesses rooted in their territory. A relationship that takes on even greater meaning today, when international flows of goods are being called into discussion. **3.** Two new projects for Campeggi and Keep in Life; I will take part in an exhibition and a book curated by Domitilla Dardi, *Playgrounding* for Corraini Edizioni, at the 121+ bookstore in Milan, via Savona 17/A.



DRAGA & AUREL

1. Our *Cala* bench: the lockdown somehow made us rediscover our city, Como, and our lake. And *Cala* was inspired by the beauty of the lake. **2.** The *Golia* coffee tables, seen last September at the Rossana Orlandi Gallery. We presented them because they are associated with the return of Design Week, and they mark the beginning of a collaboration, the one with Rossana, an icon of art and design. **3.** We will be present at RoCOLLECTIBLE in the Rossana Orlandi Gallery with an installation. We will expand our "Transparency Matters" line with new pieces including the *Tito* bed, and the *Joy* lamp in round format. At the Nilufar Depot we will present the capsule collection *The Candy Box* (in photo). At the show we will be signing pieces for Baxter, Visionnaire, Wall&decò, Gallotti&Radice, Essential Home and DelightFULL.

RE/START



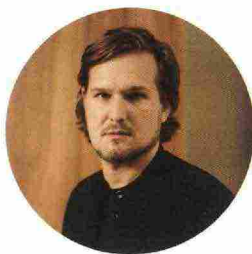
JACOPO FOGGINI

1. I spent most of the lockdown in my house in the country. There, I had to adjust my life to the slow, wise rhythms of nature, cooking and above all tending my vegetable garden. So I am reminded of the hoe: a simple tool I see as a case of absolute elegance. **2.** Getting back to Milan with lots of new ideas and a project on which I have worked with a passion: my first outdoor collection for Edra. The slats of the *A'Mare* collection (in photo) are the objects I handled, studied and observed the most in those months. **3.** The *A'Mare* collection for Edra: with Beton Eisack I will build a monumental installation at the State University: an opportunity to think about the use of innovative materials and the role of design as a symbol of dialogue and peace.



JAIME HAYON

1. Definitely pencils: for me drawing is very important. **2.** I think of the apron I use when I'm painting. And the art exhibitions I have prepared and am preparing around the world. **3.** A carpet with Nani Marquina and products made with BD Barcelona. There will also be new versions of the *T-Bone* chair made with Ceccotti Collezioni and presented last September.



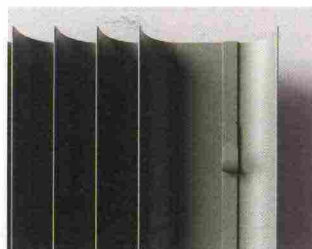
SEBASTIAN HERKNER

1. Actually there is one project that just during the blockade started and was realized: the *Aarde* planter series for the South African brand Indigenus. Unfortunately, the whole development and communication happened digitally and not physically. **2.** I designed a bathroom collection for Duravit: *Zencha*, made from natural materials such as glass, wood, and ceramic. Inspired by the Asian tea ceremony, I created an atmosphere to focus on ourselves—a slow moment to recharge our inner soul. **3.** In addition to *Aarde* for Indigenus and *Zencha* for Duravit, the following will be featured: the new *Twins* outdoor collection for Emu; the *Journey* wine glass collection for Zwiesel Glas; the *Nuage* family of coffee tables for Co Edition; the *Ulis* lounge chair for Capdell; and the *Carriagena Reina Cocoon* chair for Ames.



GIULIO IACCHETTI

1. The pencil: utilized day and night, filling up many square meters of paper with drawings and sketches! **2.** The *Memoto* electric scooter (in photo) I am again using to go to events, exhibitions and the Triennale, or to the headquarters of the many Milanese companies with which I work. **3.** An installation in Brera for Posca (the legendary Japanese markers we have all used in school or at home); a line of bags for Montbook; a family of tables for Fantin; a co-branding project for Campari and Alessi.



MASSIMO IOSA GHINI

1. During the lockdown I intensified my drawing. Not that I didn't draw, previously, but I did it for purely practical purposes, prior to computer-aided design. Manual drawing makes me freer to imagine things without too many conventions, limits and references, though I do use tools to make precise curves, to put some order into a certain freedom of forms. **2.** The *Frame* kitchen for Snaidero. There are projects that give you the possibility of developing the concept of durability and improvement... and this is one of them. **3.** Bathroom accessories and systems for Devon & Devon and GSG, the updated re-issue of *Frame* for Snaidero, and the *Simuosa* collection for Natuzzi. With Calcido, the *Brasilia* collection of radiators (in photo).



SETSU & SHINOBU ITO

1. The *Fuller* sofa for Sawaya & Moroni, an important presence in the home. The *Shellon* bed for Désirée, which offers the comfort we all desired during the lockdown; *Kiri* for Giorgetti: a bar cabinet in natural wood, which brings art and nature into the home. **2.** *Inori*, the first modular glass bookcase, developed 10 years ago, updated and expanded. And *Flying Atoll* for Soneva Art Glass: a collection of works of art made in recycled glass. **3.** The *Karin* outdoor sofa: the lockdown experience taught us the importance of spending time in the open air. And the *T chair* that softly wraps the body, with a light image. Both designed for Désirée.



ROBERTO LAZZERONI

1. The outdoor project of *Poltrona Frau The Secret Garden*: ironically, while we were all closed up, I was designing this collection that speaks of open spaces, air, light, sunshine... a real liberation! **2.** The *Vesper* seating system by Giorgetti, because it is a sectional design made with finished parts, for free combinations. This corresponds to the desire for freedom, which we want in the organization of the spaces of the home today. **3.** Completion of the *Vesper* project, with tables and dividers, for Giorgetti. The outdoor project of Baxter, composed of many elements; the reinterpretation of the *Montera* chairs for Poltrona Frau; a collection of tables and chairs for Flexform; and, finally, a chair, sofa, chaise longue and rondò for Ceccotti Collezioni.



PIERO LISSONI

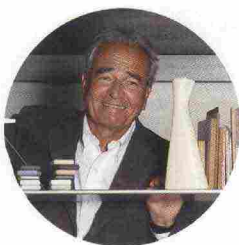
1. The iPad: it is the object that put me in touch with the world, outside the walls of the home. **2.** The *Pointbreak* collection of outdoor lamps for Flos: a bit of light after all the darkness! **3.** We are working on many projects, with my companies, and I think we will be very well prepared. For B&B Italia we are doing an armchair, a chair and a family of small tables; with Boffi there is an important anniversary; with Living Divani we have many chairs; and then there is an expansion of the collection presented in September for Fendi Casa... then there's Knoll (in photo), and lots of other surprises!

RE/START



JEAN-MARIE MASSAUD

1. The *Universal* chair made with MDF: an ambitious project based on an important innovation, of high quality, sustainable and versatile. The patents and technical development took four years. A project created to last in time. **2.** The work of reduction on the *Lloyd Textile*, done with Poltrona Frau. Reduction and understatement are synonyms for magic and charm in this case. Sustainability is not a punishment, but the quintessence. **3.** The *Oell* tables for Arper; the *Paros* outdoor sofas for Dedon; a line with Poliform, including the *Brera* (in photo) and *Aiko* sofa systems, and a range of wardrobes in glass and wood; for Poltrona Frau, the *Archibald* chair and the *Lloyd* cabinet; for MDF, the *Neil Fabric* and *Neil Jean* chairs, and the versatile *Universal* chair; for Zanat, elegant handmade cabinets.



ALBERTO MEDA

1. During the lockdown I took part in a competition organized by a European company for the "concept design" of a high-capacity public transport system with small automatic drive electric vehicles for 4 persons, complete with infrastructures. **2.** An extension of the systems *XF* (2012) and *Logik* (2017) of Th.Kohl: a new modular component in aluminium sheet with bracing and/or walls in plexiglass, for counter displays of products. **3.** *Chiaroscuro*, a system of lamps for Foscarini; *Hub*, a wall system for Alias, designed with my son Francesco, as the center of the living area, for various functions: reading, shelving, music, offered in various versions, from the classic bookcase to the console to surfaces for objects.



MIST-O

1. During the lockdown we went ahead for the most part with a cosmetics project for Shiro Japan. This was a first for us, in a particular situation. We remember the sudden changes in ways of communicating, which was difficult and alienating at the start. **2.** The *Moon* collection with Living Divani: the first project presented after lockdown, which began slightly before the start of the pandemic. It survived the stoppage and the uncertainty, so it must be a strong, valid project. **3.** The table for Zanotta: it is an interpretation of a trestle table, but made into a system, with tops in various materials and sizes from very small to very large, covering a wide range of situations. In the home or at work.



PAOLA NAVONE

1. I'd say the "magic wall" in my home, not a single object but many objects. A collection, an entire three-dimensional wall made with ceramics and porcelain, vases, pitchers, cups, plates... in many shades of blue and turquoise. It has the colors of water, the colors of my world. It makes me feel like I am in a faraway place, and it tells me a small story of the world. **2.** Definitely my Harley Davidson. For me it is synonymous with freedom, fun and slightly impromptu journeys, air and sunshine, starting over. **3.** At the Salone there will be new projects presented by companies with which we have worked for years, like Baxter, Gervasoni, Casamilano, Ethimo and Slide. Then there will be new creative adventures and new collections for Caimi, Exteta, Midj (the *Bolle* collection seen here), Illulian, Mariaflora, Abk and Turri.



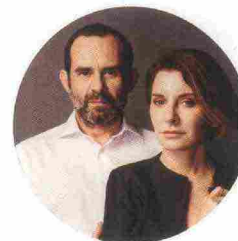
LUCA NICHETTO

1. Face masks. It's banal, but for obvious reasons I couldn't choose anything else. **2.** Trolley bags. To resume traveling – especially in my case, as an Italian in Stockholm with a family in Murano, and as a designer with international friendships – has almost been a sort of rebirth. **3.** The *Jeometrica* furnishing system; the *Bemyquest* installation for Vitale Barberis Canonico at Via Solferino 23; the set-up for La Manufacture at the Poldi Pezzoli museum; and, finally, the *Monumental* installation for Wittmann at the fair.



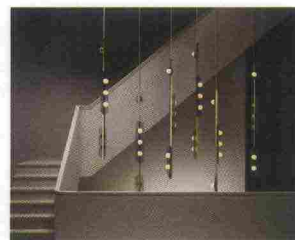
FABIO NOVEMBRE

1. My guitar is the object I associate with that period of isolation and inevitable reflection. Now when I am looking for some balance, I tune the guitar and my voice, producing sounds that for me are a form of meditative prayer, while for others they are also a form of entertainment. I've become a cross between a sadhu and a mariachi. **2.** Besides books and music, the other major pastime was cinema: the lockdown made me reassess that new form of film narrative, the TV series. The saga of *Peaky Blinders* features an extremely characteristic piece of clothing: the newsboy cap. It became the fetish of my restart, with the brashness of a *Peaky Blinders*. **3.** Like every year, we enjoy working with very different brands, from Natuzzi to Driade, Scavolini to Citco, by way of Seletti, Villari Tapis Rouge and many others.



LUDOVICA + ROBERTO PALOMBA

1. Undoubtedly our *Lama* chaise longue for Zanotta: it is the object we spent the most time with in that period. We rested, chatted, made work calls, or read books. **2.** The *Laguna* collection of vases for Purho. After the pandemic, before reaching the final design, we made many visits to Murano, working once more in physical presence with the craftsmen. An approach we missed during the pandemic period. **3.** A new upholstered piece, *Happy Jack*, for Poltrona Frau. We have moved forward this year with the Versace Home Collection: a very interesting partnership between fashion and design. And a capsule collection for Fratelli Rossetti: a sandal for her and for him, an ode to the Mediterranean summer and outdoor living.



FEDERICO PERI

1. The project developed for CTO Lighting (*Modulo*, in photo): for the first time I had to do the prototyping via video calls and email. **2.** The "essential" collection of vases for Purho Murano: the first project I was able to conduct in person after the restart, with a great sense of freedom! **3.** For Baxter we have gone deeper with the family of the *Stone* bed, with new complements; for Giacobazzi Legno, I have designed my first wood floor; for Dall'Agnese I've created a new bed. With Cierre Imbottiti, I will present a line inspired by the Seventies. For Marta Sala Éditions, I have designed a small collection of complements for the living area. Finally, with Gervasoni, I am showing a fixed and extensible dining table, a sideboard and a credenza.

RE/START



MATTEO RAGNI

1. The exercise bike: I'll admit that I too yielded to the idea of getting a muscular body by buying one. Now it stands in solitude in my living room. **2.** Definitely the recent reissue of *Moscardino* in steel with the Alessi trademark, a piece originally produced by Pandora Design in Mater-bi. **3.** After two years of intense artistic direction for Twills: we will be showing new products in a booth of 430 sqm, items designed by us, Achille Castiglioni, Luca Nichetto, Robin Rizzini, but also young international talents like Terence Coton and Yuetong Shi. With PdiPigna, at the Circolo Filologico in Milan, we will present a new collection of notebooks illustrated by Olimpia Zagnoli (in photo), as well as collections by Gio Ponti and Enzo Mari, and historical reissues of *Nero Oriente* and *Bella Copia*.



ELENA SALMISTRARO

1. Surgical masks. An object that forced its way into our lives. I had the pleasure of designing one, for an art project in collaboration with the MAXXI in Rome and Alcantara. **2.** I connect it with a collection, *Posidonia*, designed for Natuzzi. A project that began and was developed in that period, and was released last year. This was the first time I had approached an entire collection: a sofa, an armchair, a lamp, a carpet and cushions. **3.** At the Salone there will be my carpet collection for Illulian, handles for DnD and a tea set for Bosa. The *Pantelleria* line for Lithea is being expanded, like the line for Scapin, and the *Spire* washstands for Flaminia will be on view. New tables, already presented, will arrive for Cappellini, as well as jewelry designed for Alessi.



INGA SEMPÉ

1. The object linked to the lockdown period is the mask. They were hard to find in France, so I sewed thousands of them and gave them away to people in the street. **2.** The *Tripot* stool designed for the small Swedish firm Articles, directed by the designer Björn Dahlström. The first prototypes (made in Italy) arrived just at the end of the lockdown. They allowed me to go back to working with my hands, with real material, no longer just digital work. **3.** For Ariake I have created a large mirror behind which you can hide anything; for Glas Italia I designed two curved mirror cabinets; and for Articles, I will present *Tripot*, a triangular wooden stool.



PHILIPPE STARCK

1. My A4 tracing paper pad and my 092B Japanese pencil, with which I always draw with, are no longer in production, so I bought the entire stock, thanks to which I was able to create even more than usual, with the utmost happiness, because I was not traveling and knocked out by jetlag. **2.** It is definitely my A4 tracing paper pad and my Japanese pencil, because thanks to that I was able to continue working on all the projects. For me there's never a stop, so there cannot be a restart. **3.** We will present new creations with Axor, Baccarat, Duravit, Glas Italia, a chandelier for Kartell (in photo) and also, with a new manufacturer, an "eternal chair."



STUDIO KLASS

1. One of the projects that is a symbol of the lockdown for us was *Touch Down Unit* (in photo), designed for UniFor and conceived for the world of the office. The idea was to have an extremely compact workstation that makes it possible to carry out a series of activities, for those who do not have an assigned desk. **2.** As soon as the lockdown period ended, we were invited by Molteni&C to work on a new retail concept for the B2B world: Contract Atelier, a space where clients are accompanied in an experiential path, with the possibility of choosing any type of solution, material, finish and service for their projects. **3.** At the Fuorisalone 2022 the Contract Atelier space will open at Via Cavallotti 15 in Milan. We will also present a new upholstered chair for Fiam Italia.



PATRICIA URQUIOLA

1. Definitely books. I've always been a very avid and curious reader, but the lockdown gave me extra time to read and study, to delve into themes and titles that interest me. **2.** The passport, when we began to travel again. **3.** With Cassina, I will present a new piece of the Sengu family: a boldface reinterpretation of the sofa, which becomes *Sengu Bold*. With a group of young artisans of Murano glass, we have created the *Sestiere* vases. For Flos we'll be showing *Almendra*, a new modular lamp. With Moroso the focus is on *Anorak*, returning to the theme of the garment that dresses the sofa. There will also be new collaborations, like the *Gala-zoo* installation by Buccellati, the projects for the Moroso showroom, and those of the trade fair stands of Kettal and Ciment. And much more.



VINCENT VAN DUYSSEN

1. The new *Kummel* blanket from the *Relaxwear* collection by Loro Piana. I like to feel warm and comfortable, but I am also a fan of this collection because Loro Piana and I share the same values and preferences: the selected materials, the exquisite craftsmanship, the tradition. **2.** The pandemic never stopped me, because we began with new jobs. So I cannot say that there was a "stop and restart" for me. In that period I began working on various new projects and products all over the world, for large manufacturers and iconic brands. **3.** There will be new collections designed for Molteni&C, Dada, Bulò, Kettal and Flos.