



**pCon**

## New organization registration

Quick guide

**cappellini**





Intro



Registration



Download  
DataClient



Install  
DataClient



Wait for data  
confirmation



Download data



Invite  
colleagues

- You'll be part of the **pCon community** at the end of this process
- Using offline configurable data will dramatically increase your **work efficiency and quality**





Intro



Registration



Download  
DataClient



Install  
DataClient



Wait for data  
confirmation



Download data



Invite  
colleagues

If you have problems or questions about  
this process please contact

**support-se@easterngraphics.com**

**+39.051.587.5509**



Intro



Registration



Download  
DataClient



Install  
DataClient



Wait for data  
confirmation



Download data



Invite  
colleagues

- Go to the link  
<https://login.pcon-solutions.com/catalog/I5BQS1>
- Click **Let's go!**

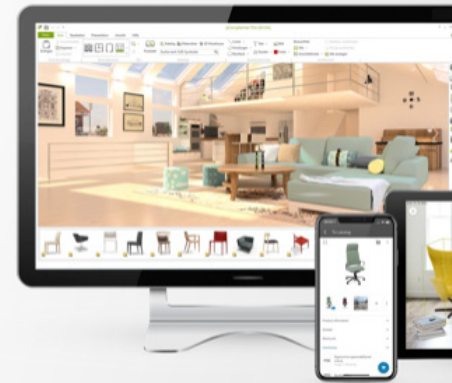
## Welcome to pCon!

pCon offers 3D product configuration, room planning, comprehensive product information and offer creation – on mobile devices as well as desktop computers.



Log in now - or register in only a few steps.

Let's go!





Intro



Registration



Download  
DataClient



Install  
DataClient



Wait for data  
confirmation

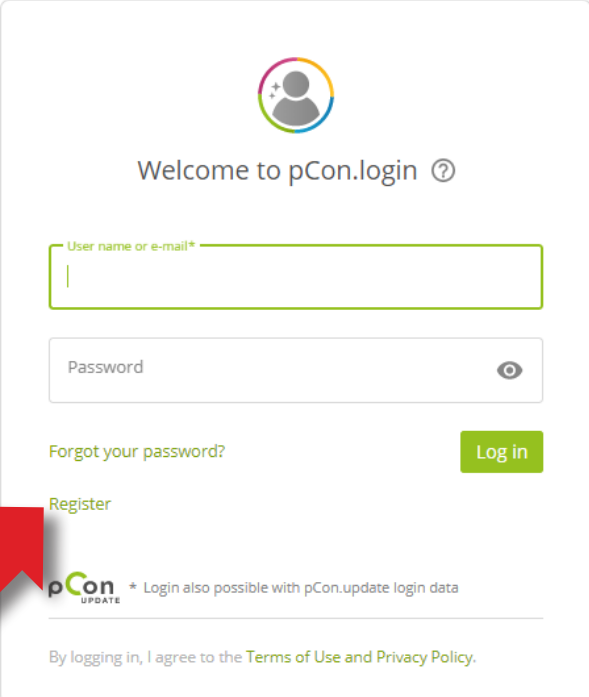


Download data



Invite  
colleagues

- If you already have an account, enter your credentials
- If you do not have an account, create one by clicking on **Register**



The image shows a login and registration form for pCon.login. At the top is a user icon. Below it is the text "Welcome to pCon.login" with a help icon. There are two input fields: "User name or e-mail\*" and "Password". Below the password field is a "Forgot your password?" link and a "Log in" button. Below the "Log in" button is a "Register" link. At the bottom is the pCon UPDATE logo and a note: "\* Login also possible with pCon.update login data". At the very bottom is a line of text: "By logging in, I agree to the Terms of Use and Privacy Policy." A large red arrow points to the "Register" link.

Welcome to pCon.login ?

User name or e-mail\*

Password

Forgot your password?

Log in

Register

pCon UPDATE \* Login also possible with pCon.update login data

By logging in, I agree to the Terms of Use and Privacy Policy.



Intro



Registration



Download  
DataClient



Install  
DataClient



Wait for data  
confirmation



Download data



Invite  
colleagues

- All fields are mandatory
- **Avoid registering with a generic email address** such as gmail or hotmail - it will speed up the approval process
- Enter the name and address of your organization. If you're a **independent professional** in the 'Company' field enter your professional title followed by your first and last names
- Click **Register**



- One registration per company
- Remember your Username and Password

pCon.login

Log in

Help

### Registration for pCon

**Your colleagues are already working with pCon?**  
Skip registration, get invited by a colleague!

pCon supports your whole organization: Employees share access to manufacturer catalogs and settings. We recommend that you register your organization once and invite additional members.  
[More Information »](#)

E-mail address\* Campo obbligatorio

Password\*

Re-enter password\*

Title\* Mr.

First name\*

Last name\*

Telephone Italy

I am (Not set)

Organization name

Street/ House No.

Zipcode

City

Country Italy

☐ I agree with the [terms of use](#) and [privacy policy](#) ».\*

\* Required field

Legal notice  
Terms of use  
Maintenance  
© EasternGraphics GmbH

Cancel Register





Intro



Registration



Download  
DataClient



Install  
DataClient



Wait for data  
confirmation



Download data



Invite  
colleagues

- You'll receive an email with a **link to confirm your email address - Click on it**
  - If you don't receive it after some minutes control the spam folder
- You'll be redirected to the pCon.login portal
- Click on **Continue**



Dear Mr. Grilli,

Thank you for your registration on pCon.update.

To continue with your registration, please confirm your e-mail address.

Confirm e-mail address

This confirmation process is necessary to make sure that the e-mail you entered is correct. If you have not activated this service, please ignore this e-mail.



pCon.login

Welcome to pCon.login!

Your e-mail address has been confirmed. You can now use your pCon.login.

Continue



Intro



Registration



Download  
DataClient



Install  
DataClient



Wait for data  
confirmation



Download data



Invite  
colleagues

- Once the registration is confirmed, you can request data
- Click on **Request**
- Generally the requests are approved within 24 hours



pCon.login

## Request Access to Catalog



Hereby you request the activation of the catalog directly from the manufacturer. You will receive a notification e-mail as soon as the manufacturer has decided on your request.

Skip

Request







Intro



Registration



Download  
DataClient



Install  
DataClient



Wait for data  
confirmation



Download data



Invite  
colleagues

- In the side menu click on **Applications**
- Click **Select** in **pCon.planner MarketingEdition**
  - It's free
  - Necessary for using configurable data offline
  - For other offline applications a license is required
- Click on **No pCon update installed?**

The screenshot shows the pCon.login web application. On the left is a dark sidebar menu with the following items: Home, User, Account, Organization, Account, Users, User groups, Manufacturer catalogs, **Applications** (highlighted with a red arrow labeled '1'), Channels, Licenses, Contact, and Help. The main content area is titled 'Applications' and has three tabs: Web, Phone & Tablet, and Computer & Notebook (which is selected). Below the tabs, there is a message: 'pCon.update will install the selected applications on your desktop computer or notebook during the next update. Please start a manual pCon update if you want to use the applications immediately. No pCon.update installed?' (with a red arrow labeled '3' pointing to it). Below this message are two application cards. The first card is for 'pCon.planner 8 PRO' with a 'License (free 30 days)' and a 'Select' button (with a red arrow labeled '2' pointing to it). The second card is for 'pCon.planner 8 MarketingEdition' with a 'Free' license and a 'Select' button.



Intro



Registration



Download  
DataClient



Install  
DataClient



Wait for data  
confirmation



Download data



Invite  
colleagues

- Download **pCon.update DataClient**
  - Click on the **Download** link
  - It will maintain your data, and all pCon offline applications, always up to date

Menu icons: Home, User, Profile, Settings, Reports, Analytics, Integrations, Help, Logout


## pCon.login

### pCon.update

pCon.update provides pCon applications and manufacturer catalogs on your computer.

If you do not yet use pCon on your computer, please download and install the DataClient. It is free of charge. The DataClient will manage the installation of the required pCon applications.

[System Requirements »](#)



#### DataClient (required)

The DataClient installs and updates pCon applications and manufacturer catalogs on your computer.

	Standard	Pro
Download and installation of OFML product data and pCon applications	✓	✓
Update notification	✓	✓
Automatic installation of updates		✓
Installing updates without administrator rights		✓
Installing updates from local network storage		✓
Supports Windows Server		✓

The standard edition is free of charge. Get in touch with your [contact person](#) » to purchase the Pro edition.

[User Manual \(PDF\) »](#)

[DataClient](#) (10.0 MB)





Intro



Registration



Download  
DataClient



Install  
DataClient



Wait for data  
confirmation



Download data



Invite  
colleagues

- In the **Manufacturer catalogs** menu you can check the **status** of the data request
- To complete the registration to the pCon community, click on **Activation Page**
- In the new window, **check that the data is correct** and click on Request
- You will receive an email with the approval usually within 24 hours

pCon.login

Home

User

Account

Organization

Account

Users

User groups

**Manufacturer catalogs**

Applications

Channels

Licenses

Contact

Help

Legal notice

Terms of use

### Manufacturer Catalogs

Your approved catalogs are available in all pCon applications ».

☐ Please send me an e-mail when new manufacturers are available.

Currently, only the catalogs for which you have been invited by the respective manufacturer are activated. Do you want access to all catalogs? Request activation for the pCon Community. It is free of charge. [Activation Page »](#)

Order: Status ▾ Availability: IT ▾ Status ▾ Sector ▾ More ▾

Search

In Process

Request again

Request

Request

Request

Request

Request

Data request status



Intro



Registration



Download  
DataClient



Install  
DataClient



Wait for data  
confirmation



Download data

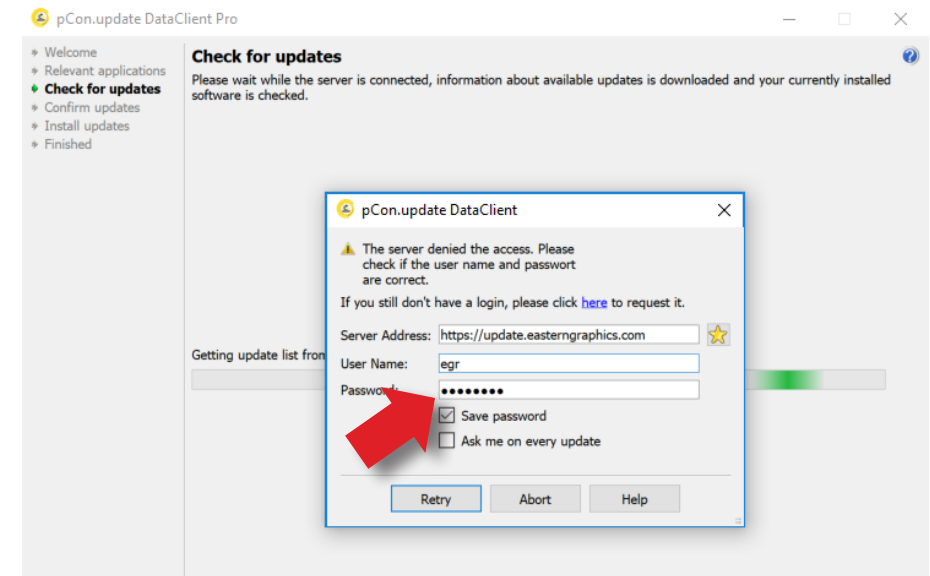


Invite  
colleagues

- Install the DataClient, following the installation wizard



- After the installation is concluded, **run the DataClient** and follow the setting wizard
- When requested, insert your **pCon.login account credentials**
- Check on **Save password** and **click OK**





Intro



Registration



Download  
DataClient



Install  
DataClient



Wait for data  
confirmation

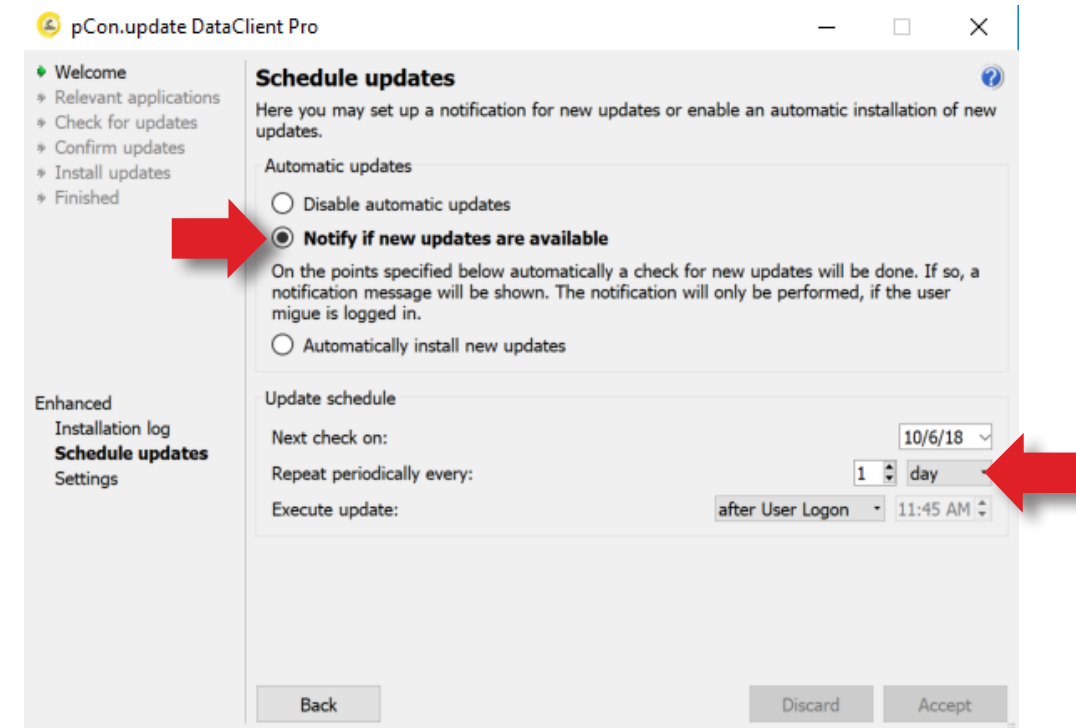


Download data



Invite  
colleagues

- Click on **Schedule updates** on the left menu
- Select the following options
  - **Notify if new updates are available**
  - **Repeat periodically every:** to 'day'
  - **Execute update** to 'after User Logon'
- You'll receive an automatic notification when new updates are available





Intro



Registration



Download  
DataClient



Install  
DataClient



Wait for data  
confirmation



Download data



Invite  
colleagues

- Now you'll have to wait for the manufacturer to approve the data access
  - Usually it happens within 24 hours
  - When you receive the confirmation email continue with this guide
- 
- For the **online applications** (pCon.box and pCon.facts) you can start using the data immediately
  - For the **offline applications** (pCon.planner and pCon.basket) you'll have to download the data into your computer using pCon.update DataClient



Dear Sir or Madam,

✓ EasternGraphics - Kitchen Library has shared its catalog with you.

You are now free to use the EasternGraphics - Kitchen Library catalog in all pCon applications and services (e.g. [pCon.box](#), [pCon.facts](#)). You can also download the catalog with the [pCon.update DataClient](#) to use it in the [pCon.planner](#).

Best regards,  
Your pCon.login team



pCon.facts



pCon.box





Intro



Registration

Download  
DataClientInstall  
DataClientWait for data  
confirmation

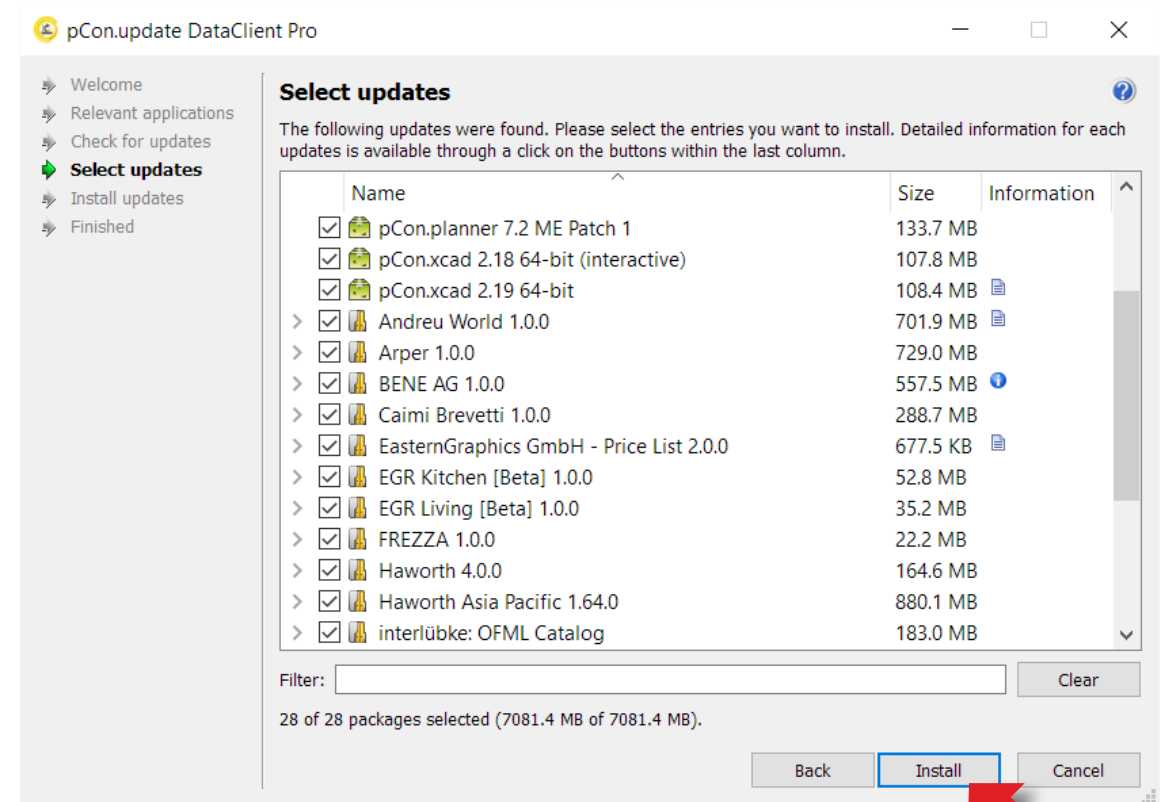
Download data

Invite  
colleagues

- Start pCon.update DataClient
  - Click **Next** on the following two windows to force a control of what data is available to update
  - You'll see a list with the applications and data
- Click **Install** to start the download and installation process



It's necessary to have **pCon.planner ME or PRO** installed to use **configurable data**. The STD version available on the pCon.planner web site does not recognize configurable data.





Intro



Registration



Download  
DataClient



Install  
DataClient



Wait for data  
confirmation



Download data



Invite  
colleagues

- You are now ready to **invite other members of your organization** to join your organization's pCon.login account
- pCon.login allows you to manage your company users, request configurable data, manage software licenses and much more



pCon.login